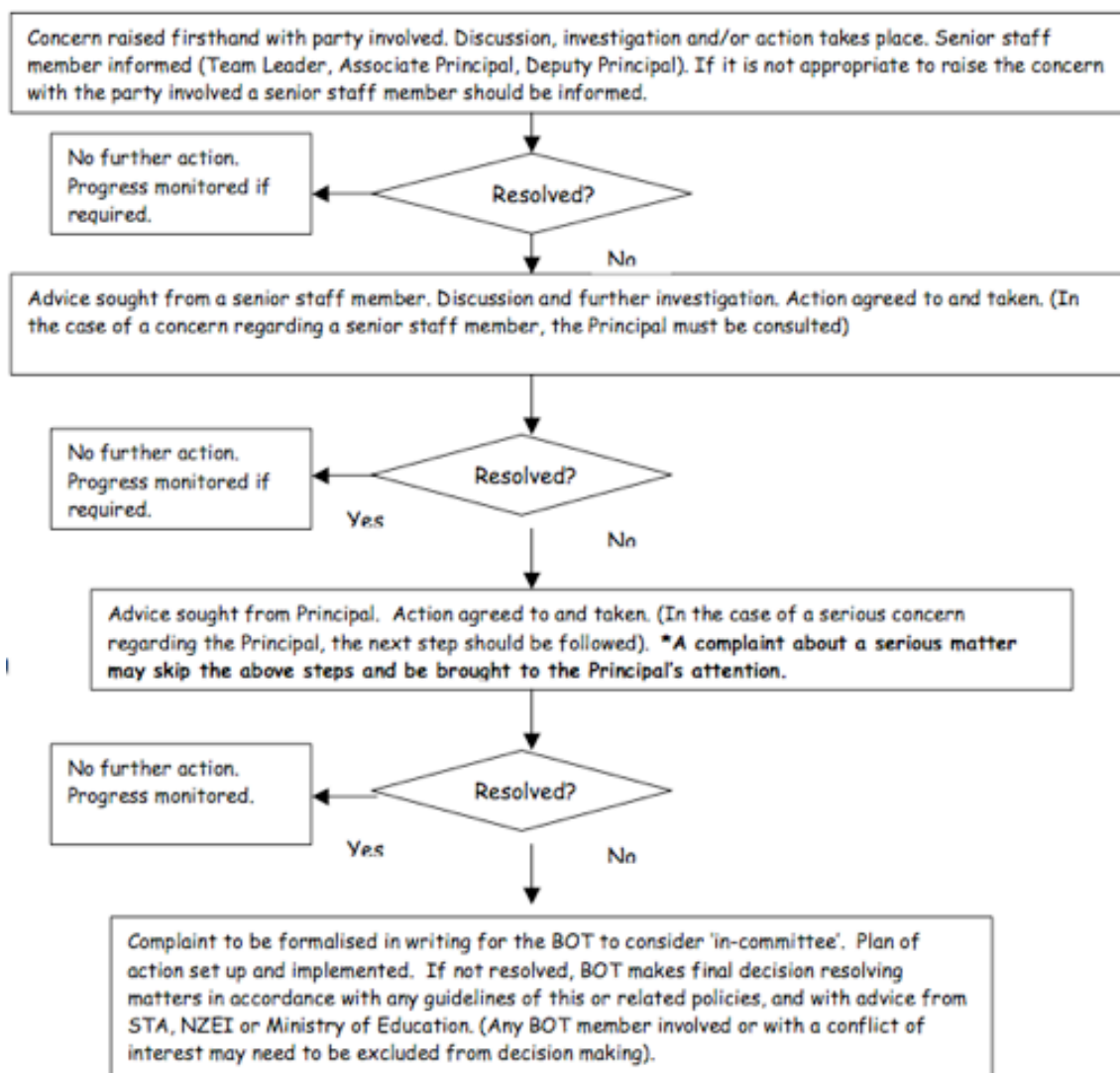


## Concerns and Complaints

### Procedure



Note: Advice and support may be gained from friends, family, colleagues, senior staff members, NZEI, School Trustees Association, Ministry of Education or similar at any time. Information will be shared with concerned parties at all levels of this procedure up to the making of the decision. In the event of a serious complaint the Board will contact litigation insurers for advice.